

**FEATURES:**

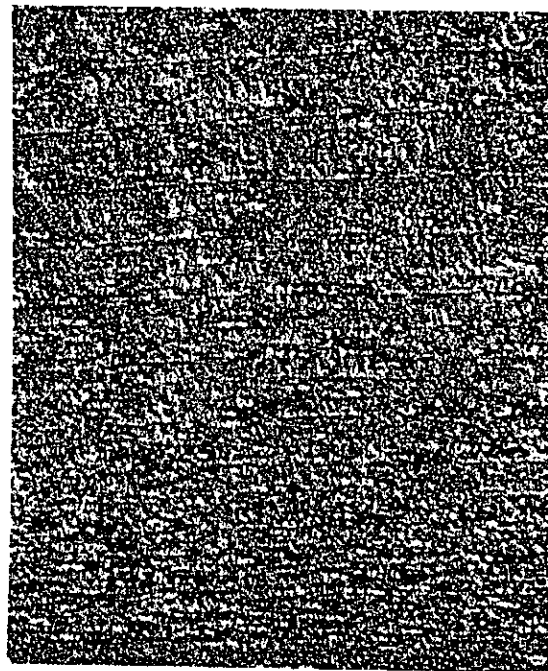
- 1/4" thickness
- sold by the square foot in random widths and lengths
- widths run 3" to 8"
- lengths run 12" to 36"
- from tropical American trees of the genus *Cedrela*, esp. *C. odorata*
- commonly used to line cigar boxes
- does not have the strong aroma as common cedar (as it is not a true cedar)
- reddish-brown color
- straight grain or shallowly interlocked grain with a moderately coarse texture

**APPLICATION:**

Recommended for lining humidors (a special container for storing cigars that has a device for keeping humidity constant) as it will not lend flavor to, or draw flavor out of cigars.

**SPECIFICATIONS:**

From "World Woods in Color" by William A. Lincoln, page 253.



*Cedrela fissilis*, Vell., and allied spp.  
Family: *Meliaceae*

**Commercial names:** Brazilian cedar, British Guiana cedar, Peruvian cedar, cigar-box cedar, cedar (UK). Usually named after the country of origin.

**Other names:** cedro, cedro batata, cedro rosa, cedro vermelho (Brazil).

**Distribution:** Central and South America except Chile.

**General description:** The colour varies according to growth conditions but is usually from pale pinkish-brown to dark reddish-brown. Straight grained or shallowly interlocked with a moderately coarse texture. Resinous with a fragrant scent due to a volatile oil which may exude and appear on the surface as a sticky resin. Weight varies from 370 to 750 kg/m<sup>3</sup> (25-46 lb/ft<sup>3</sup>) but averages about 480 kg/m<sup>3</sup> (30 lb/ft<sup>3</sup>); specific gravity .48.

**Mechanical properties:** Moderately good steam bending qualities, and is strong in relation to its weight.

**Seasoning:** It dries rapidly with very minor warping and slight checking and end splitting. Distortion or collapse of some pieces in kiln drying can be avoided with a low temperature schedule. There is very small movement in service.

**Working properties:** It is easy to work with hand or machine tools; edges must be kept sharp to avoid a tendency to woolliness. The presence of gum presents some difficulty in staining and polishing, but after suitable filling, can be brought to a good finish. It holds nails, screws well, and can be glued satisfactorily.

**Durability:** The wood is durable. Liable to attack by powder post beetle but resistant to termites. The heartwood is extremely resistant to preservative treatment but the sapwood is permeable.

**Uses:** Furniture, cabinets and panelling, high-class joinery, flooring, house construction, boat building, skins of racing boats, canoe decks, cigar boxes, sound boards for organs, clothing chests. Sliced for decorative veneers for panelling and as plywood and panel corestock.

**Note 1:** Related spp. includes *C. odorata*, L., **Central American cedar** (and according to origin, e.g. **Honduras cedar**). Also named as 'Spanish cedar'. **Note 2:** Not a true cedar.